

Eclipse 3.2

Hinge for flush doors with or without rebate

Concealed hinge for flush door with or without rebate and for aluminium doors, thanks to the 4 mm fastening thickness of hinge.



60
minutes



60
minutes



Ideal even
for aluminium
frames.



Invisible thanks
to reduced
dimensions.



For wood and
aluminium doors.

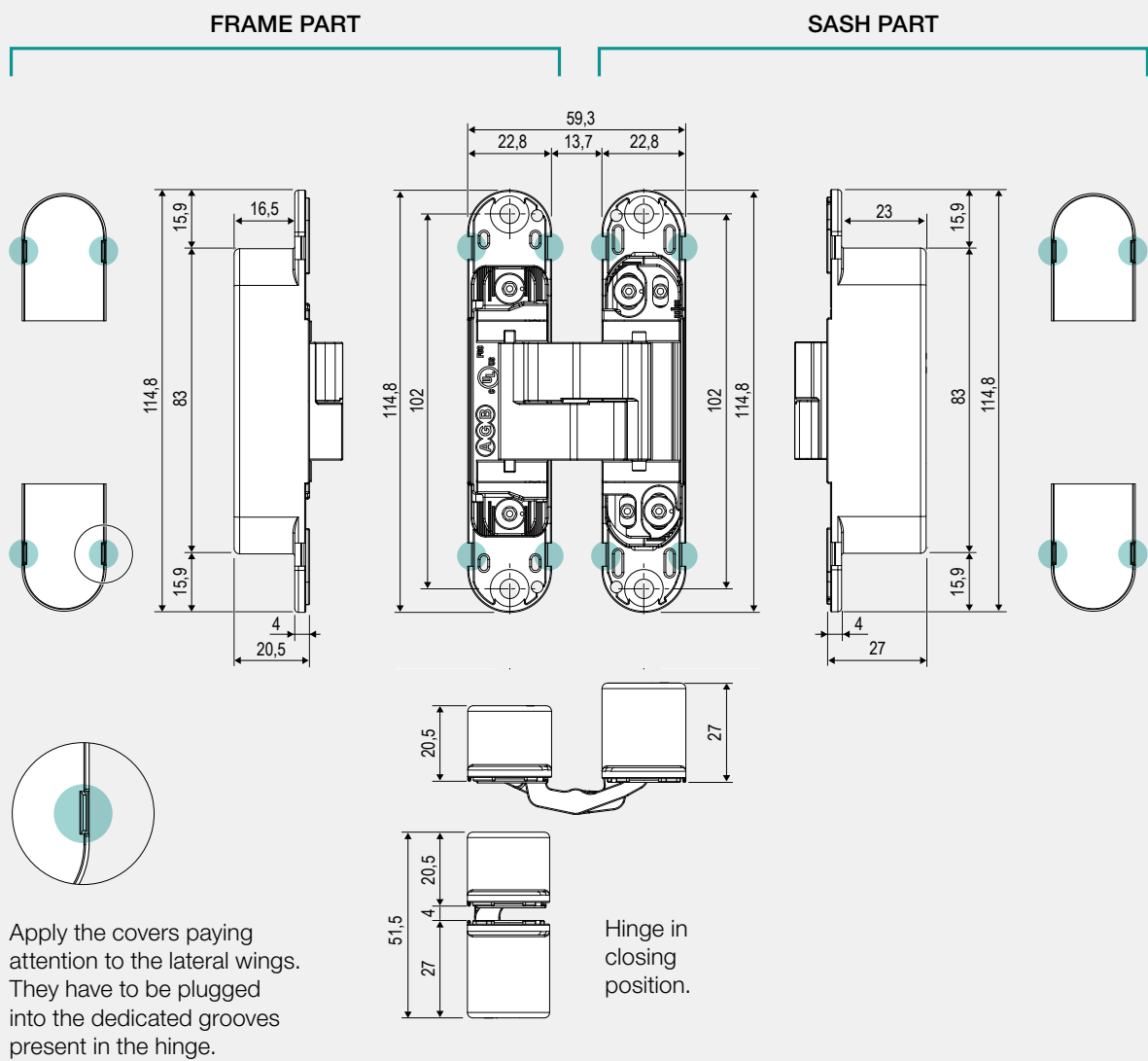


Three adjustments
completely
independent.

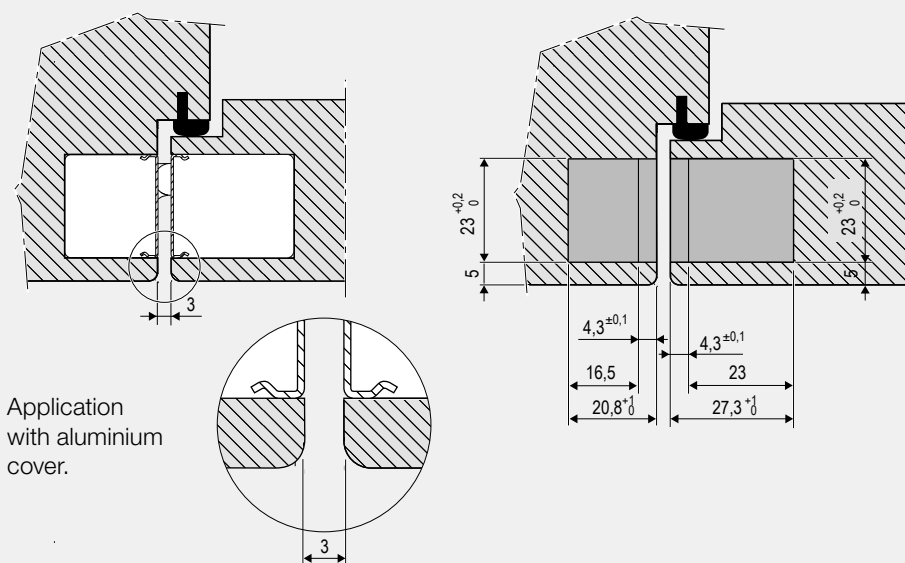


Metal or plastic
flush covers.

Hinge dimensions

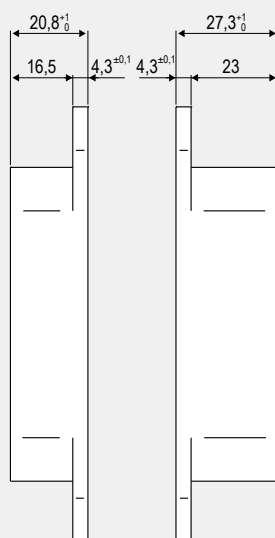
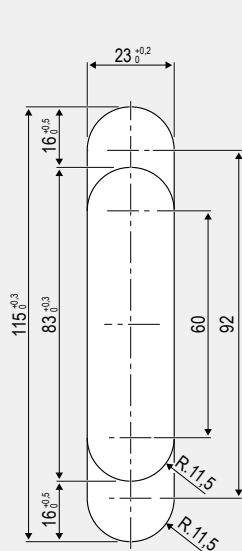


Hinge application

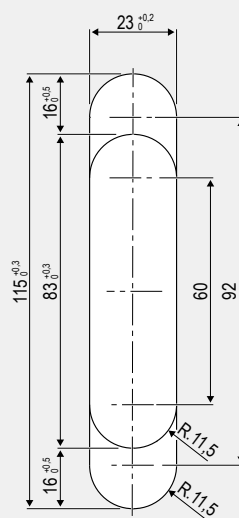


Drilling diagram

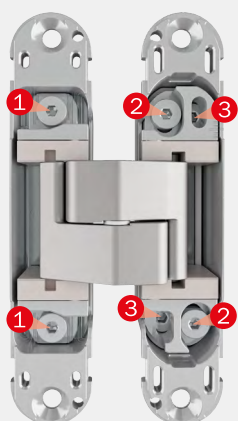
FRAME PART



SASH PART



Hinge adjustments



Please adjust the hinges with a 3 mm Allen key, as indicated here below:

- **±1 mm pressure adjustment:**
loosen the screws ❶ and move the hinge body.
After this operation fasten the screws.
- **±2 mm vertical adjustment:**
loosen the screws ❷ using a screwdriver or a wedge which is suitable for Eclipse hinges, art. E30200.89.01.
After this operation fasten the screws.
- **±1,5 mm horizontal adjustment:**
move the screws ❸.

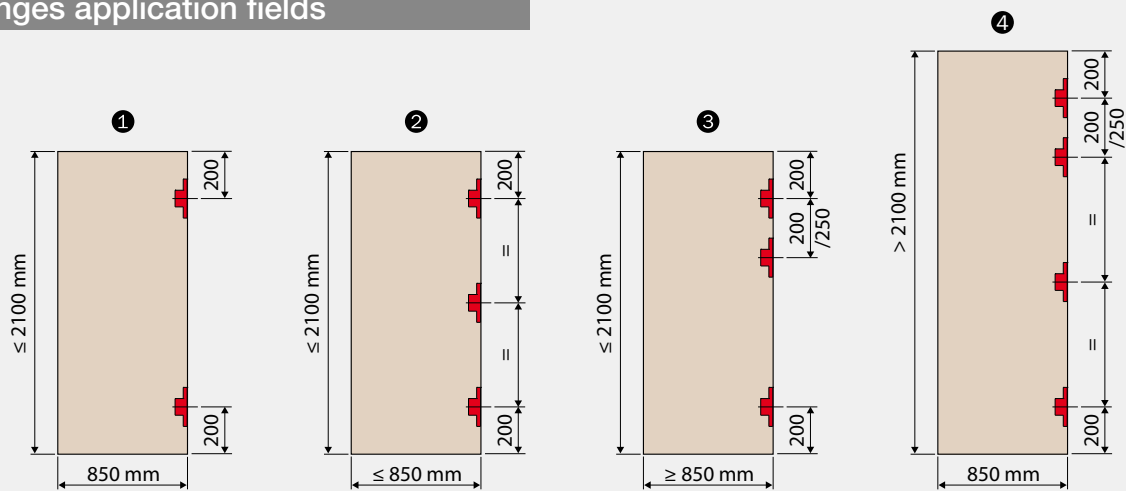
Finishes

- 03. Brass plated PVD
- 06. Nickel plated PVD
- 13. Satin nickel plated
- 22. Enamelled bronze plated
- 23. Matt brass plated

- 34. Matt chromium plated
- 42. Light bronze plated
- 72. Matt antique brass plated
- 91. White
- 93. Matt black



Hinges application fields

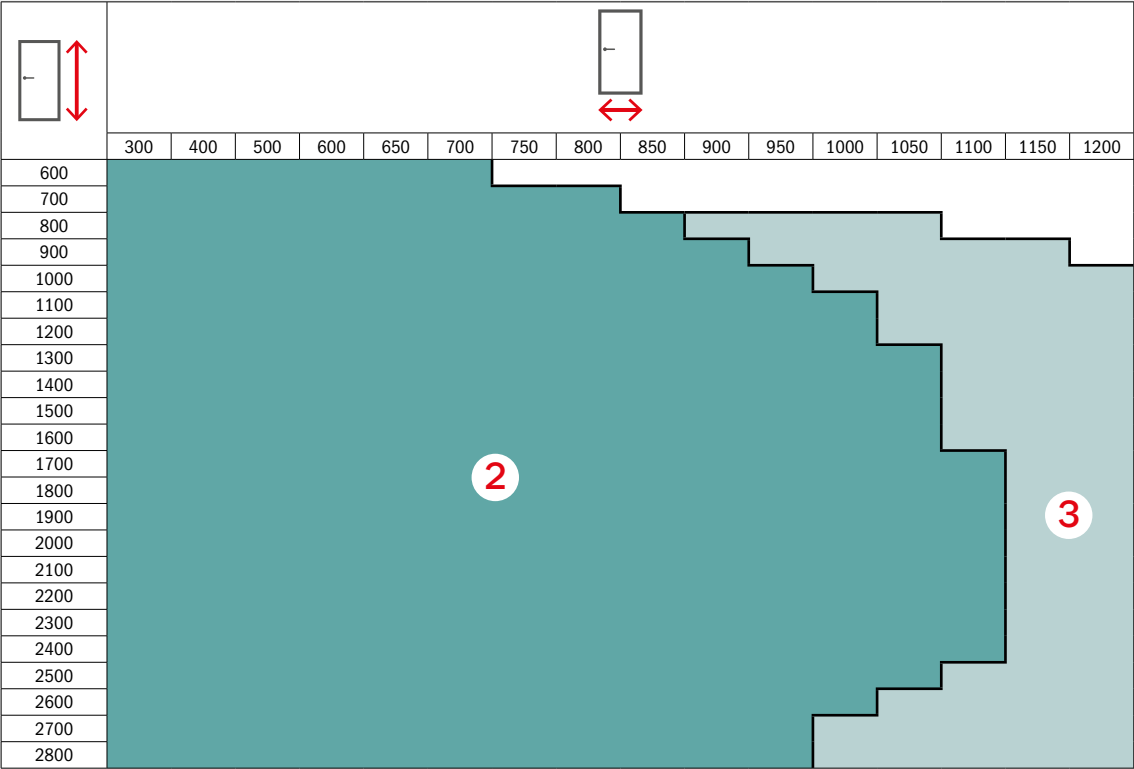


- 1 Two hinges capacity is 40 kg. In any case if the door is higher than 1600 mm we suggest you a third hinge in the central position to reduce deformations.
- 2 Three hinges capacity is 60 kg.
- 3 Three hinges capacity is 60 kg. The third hinge paired at the top is recommended when using an overhead door closer (A) or if installed in high-traffic locations.
- 4 The fourth hinge is recommended when using an overhead door closer (A) and door seals (B).

THIRD-PARTY ACCESSORIES

- Overhead door closer (A)
- Door seals (B)
- Floor-mounted door stop (C)
Install it at a distance from the hinges of at least 75 % of the sash width in the direction of the lock.

Tests carried out with softwood and fixing of the hinge with screws as per technical data sheet*



* The technical sheets are available at www.agb.it.
Doors with specific gravity of 15 kg/m².