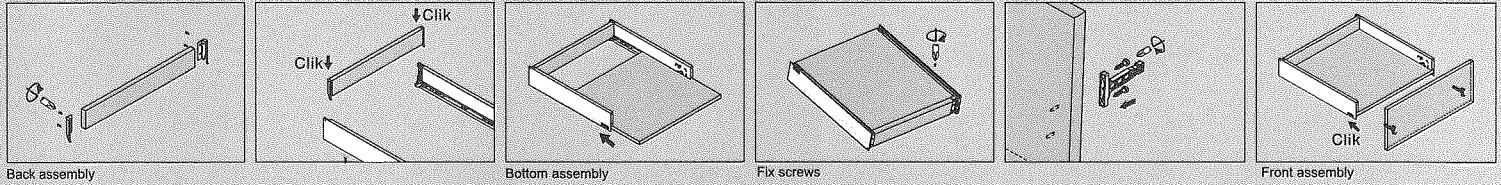
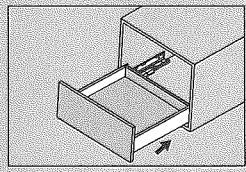


# Assembly and Adjustment (for MAGIC-PRO)

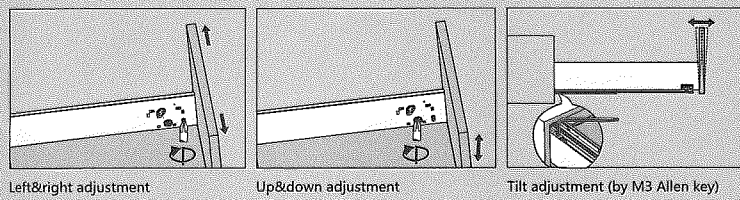
## Drawer Assembly



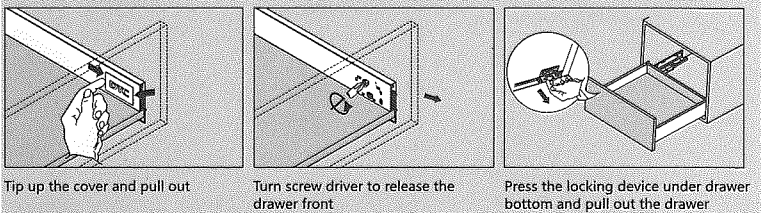
## Drawer Assembly



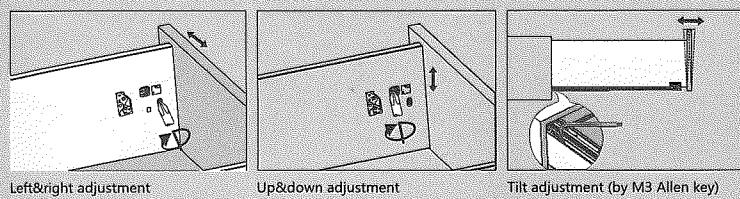
## Adjustment



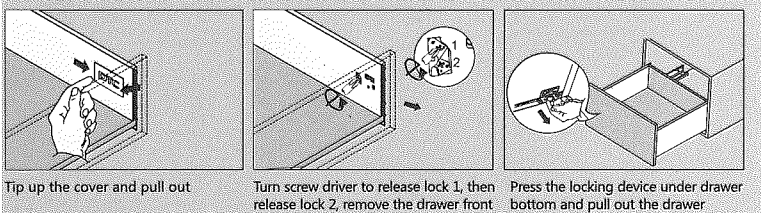
## Removal



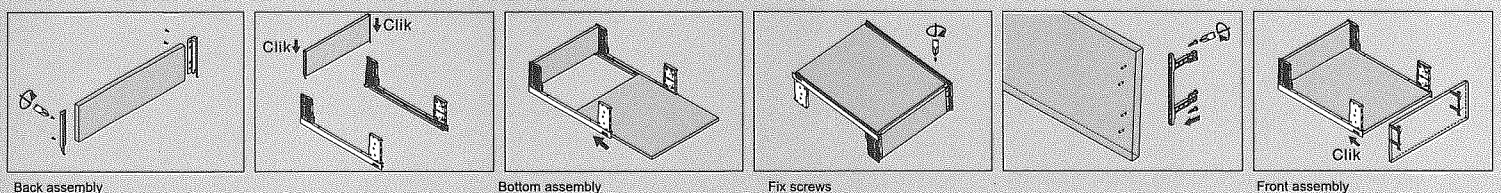
## Adjustments for High Drawer



## Removal of High Drawer



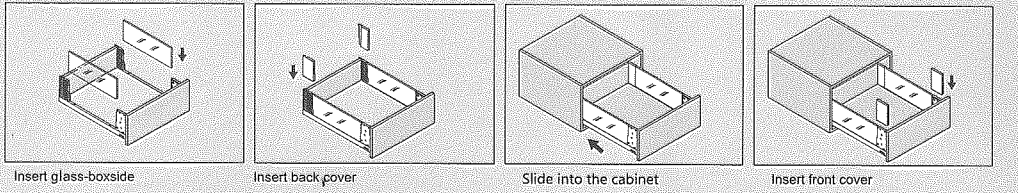
## Assembly for High Drawer Glass-boxside



# Assembly and Adjustment

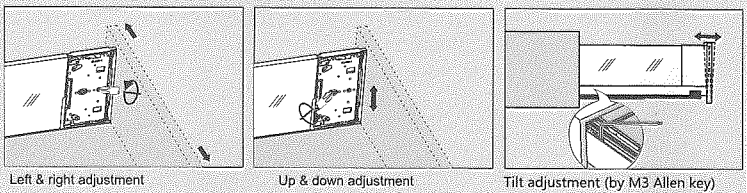
(for MAGIC-PRO)

## Assembly for High Drawer Glass-boxside



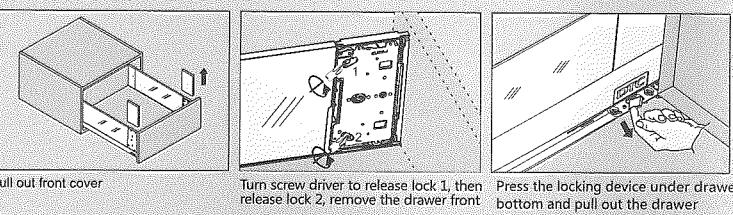
Insert glass-boxside      Insert back cover      Slide into the cabinet      Insert front cover

## Adjustment for High Drawer Glass-boxside



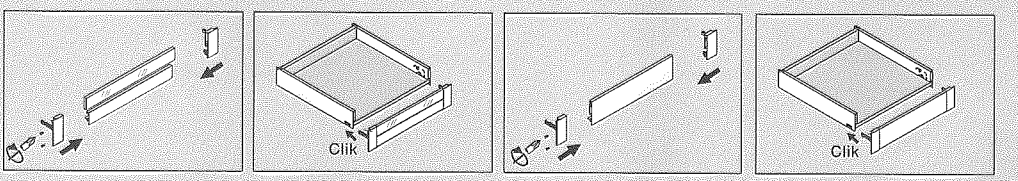
Left & right adjustment      Up & down adjustment      Tilt adjustment (by M3 Allen key)

## Removal for High Drawer Glass-boxside



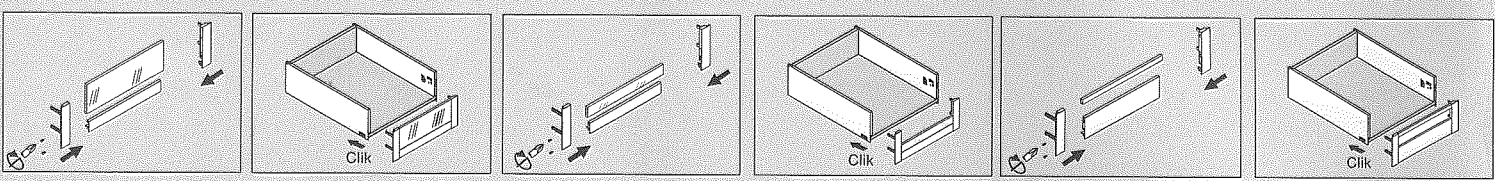
Pull out front cover      Turn screw driver to release lock 1, then release lock 2, remove the drawer front      Press the locking device under drawer bottom and pull out the drawer

## Low Inner Drawer Front assembly (M Height)



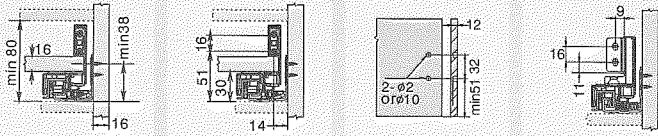
Click      Click

## High Inner Drawer Front assembly (C Height)



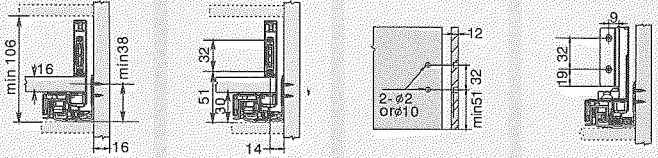
Click      Click      Click

### Super Low Drawer:N Height



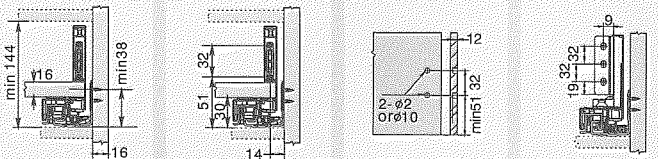
Space requirement in cabinet    Front installation dimensions    Front drilling dimensions    Back installation dimensions

### Low Drawer:M Height



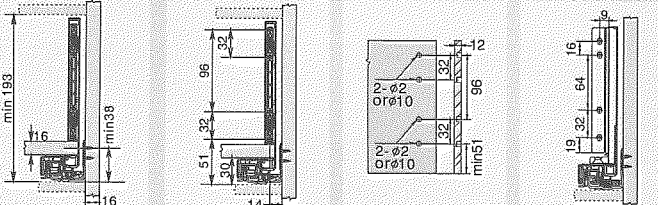
Space requirement in cabinet    Front installation dimensions    Front drilling dimensions    Back installation dimensions

### Medium Drawer:K Height



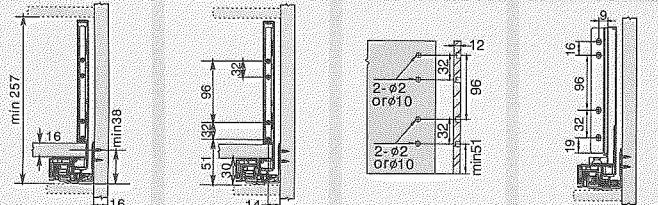
Space requirement in cabinet    Front installation dimensions    Front drilling dimensions    Back installation dimensions

### High Drawer:C Height



Space requirement in cabinet    Front installation dimensions    Front drilling dimensions    Back installation dimensions

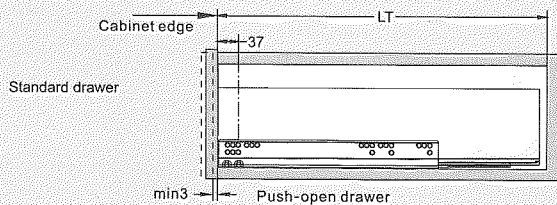
### Super High Drawer:F Height



Space requirement in cabinet    Front installation dimensions    Front drilling dimensions    Back installation dimensions

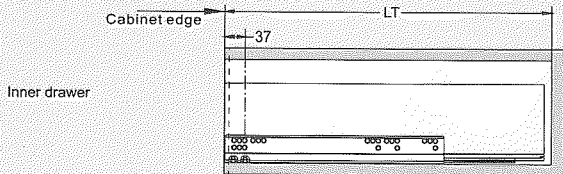
### Installation dimensions

Internal cabinet Depth =  $LT$   $LT=NL+3$

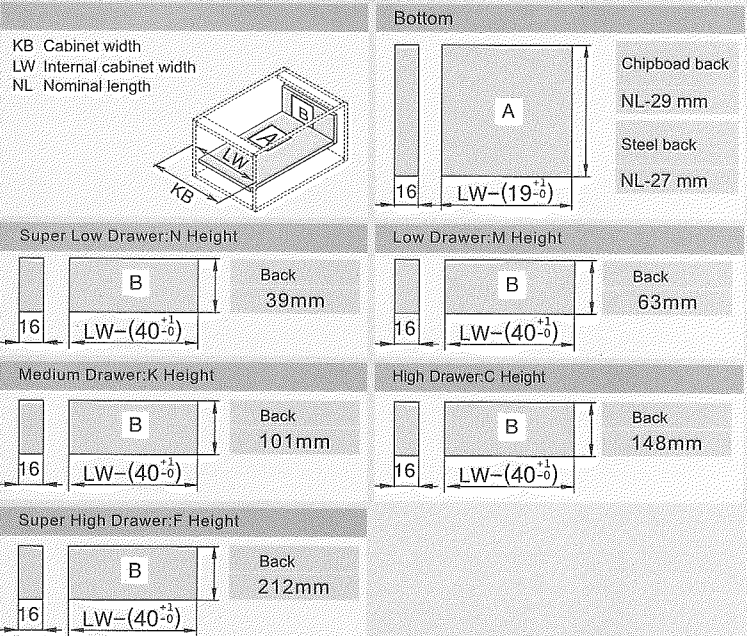


Soft close slides:  $LT=NL+3$

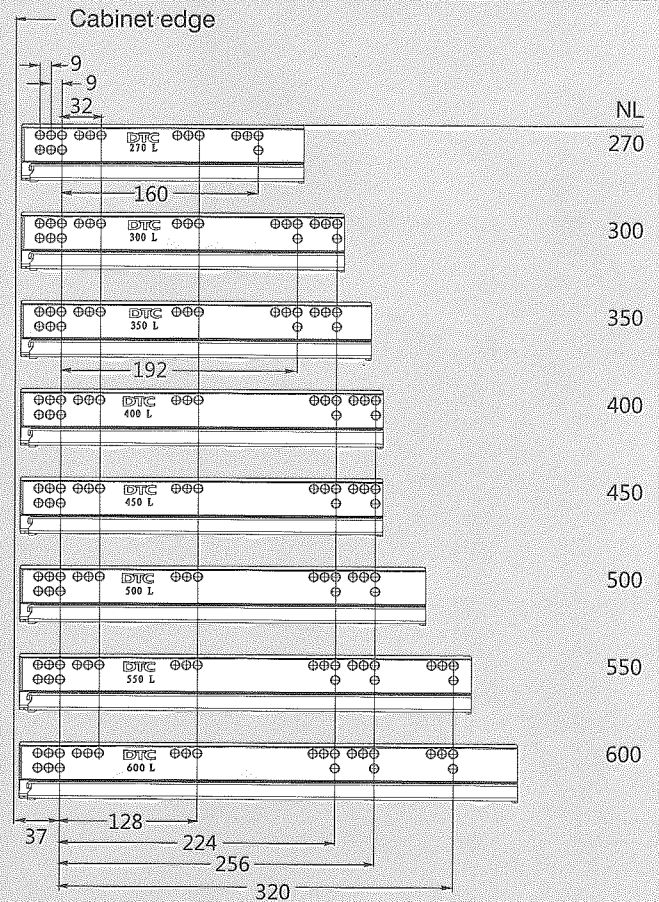
Push-open slides:  $LT=NL+12$



### Cutting dimensions for 16mm chipboard



### Screw Positions of the Slides



# DTC

GUANGDONG DONGTAI HARDWARE PRECISION MANUFACTURING CO., LTD.

Tel.: +86(0)757-25332283 Fax: +86(0)757-25551876

E-mail: dtc@dtcdtc.com Website: www.dtcdtc.com