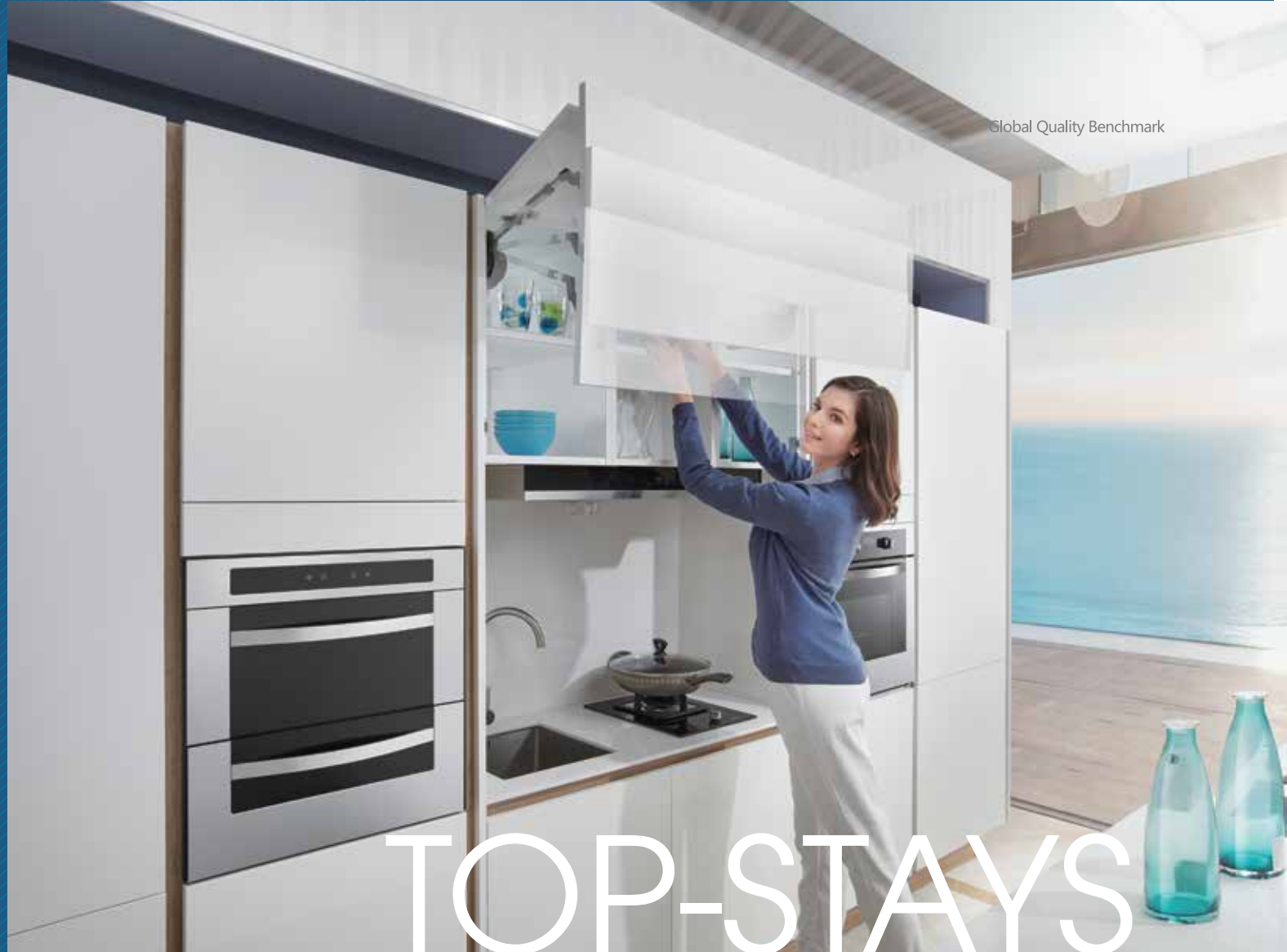


LIFTING  
SYSTEM

ST Series

TOP-STAYS



TOP-STAYS

The new experience of the lift-up door

Agile and Unconstrained,  
Impressive and Elegant



- Easy to open and stays at any desired position, silent and smooth closing, full access to the inside of the cabinet
- Side, height and depth adjustments - 3D front adjustment of both fronts
- Tool free assembly and removal, easy and fast installation



Quietness



Intelligence



Durability



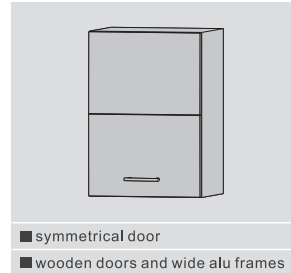
Eco-Friendliness

### PRODUCT



### DESCRIPTION

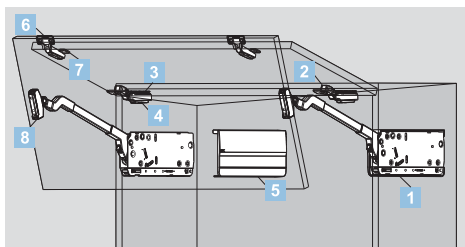
- Cabinet width up to 1800mm
- Cabinet height: 480-1040mm
- 3D front adjustment of both fronts
- Easy to open, and stays at any desired position
- Adjustable soft-closing speed
- Adjustable opening and hovering forces
- Tool free assembly and removal



### ORDER INFORMATION

1	Lift Mechanism set/ Industrial Package	
Cabinet height KH(mm)	Door weight incl handle weight (kg)	
Item No.	Set/ctn	
880-959	5.2-8.8 8.7-15.1(13.0-22.6 to use 3 lift)	
6	Centre hinge /Industrial Package Nickel Plated(A01)	
Item No.	Set/ctn	
	100	
7	Mounting plate for centre hinge/Industrial Package Nickel Plated(A01)	
Item No.	Set/ctn	
	100	
8	Front Mounting plate /Industrial Package Nickel Plated(A01)	
Item No.	Set/ctn	
	200	

2	120° hinge/Industrial Package Nickel Plated(A01)	
Item No.	Set/ctn	
	100	
3	Mounting plate for 120° hinge/Industrial Package Nickel Plated(A01)	
Item No.	Set/ctn	
	200	
4	Decoration cover for hinge arm /Industrial Package Nickel Plated(A01)	
Item No.	Set/ctn	
	1000	
5	Cover cap set/Industrial Package plastic	
Colour	Item No.	Set/ctn
White		20
Grey		20
9	Opening angle restriction clip/Industrial Package Plastic	
Opening angle	Item No.	Pcs/ctn
100°		1000
83°		1000



### ORDER INFORMATION

#### T1 Recommended Kit Package

Including:

1x Lift mechanism set	1 X Cover cap set	1 X 120° hinge set	1 X Mounting plate set for 120° hinge	1 X Decoration cover set for hinge arm
1 X Centre hinge set	1X Mounting plate set for centre hinge	1 X Front mounting plate set	20X16mm wooden screws 10X38mm wooden screws	

Please select the corresponding kit package item No. according to cabinet height ,door weight and handle weight

Cabinet height KH(mm)	Door weight incl handle weight (kg)
880-959	5.2-8.8 8.7-15.1

# TOP-STAYS

## ST Series Bi-fold Lifting System

# TOP-STAYS

## Assembly, Removal and Adjustment(for ST series Bi-fold Lifting System)

### PLANNING

Installation Dimensions(mm)-Symmetrical doors

Peg position and space requirement

Door assembly-wooden doors and wide alu frames

Cornice / crown moulding clearance

Cabinet height KH(mm)	H(mm)	Cabinet height KH(mm)	X(mm)	E.G. Cabinet height KH=600 H=600x0.3-57=123 S=356 ( see table below ) Gap F=2 X=600-123-356-2=119			
480-589	KHx0.3-28	480-1040	KH-H-S-F				
590-1040	KHx0.3-57	Cabinet height KH(mm)	S(mm)	A(°)	B(mm)	C(mm)	Q(mm)
E.G. Cabinet height KH=500 H=500x0.3-28=122 Cabinet height KH=800 H=800x0.3-57=183							
		880-959	501	~115-105	225-301	440-361	458-529

SFA=Door overlay on the side panel  
F=Gap

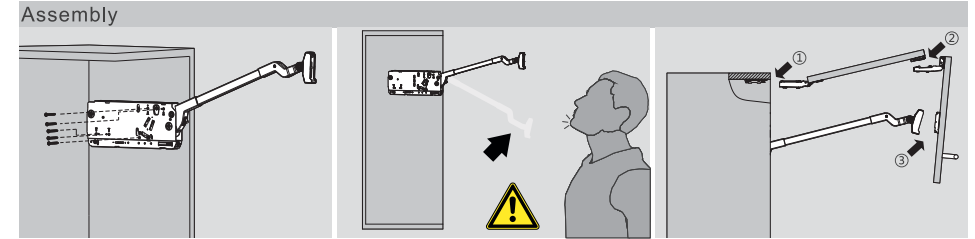
Installation Dimensions(mm)

Centre hinge

120° Hinge

Number of hinges needed for each door:  
Use 3 hinge for cabinet width over 1200mm and door weight over 12kg.  
Use 4 hinge for cabinet width over 1800mm and door weight over 12kg.

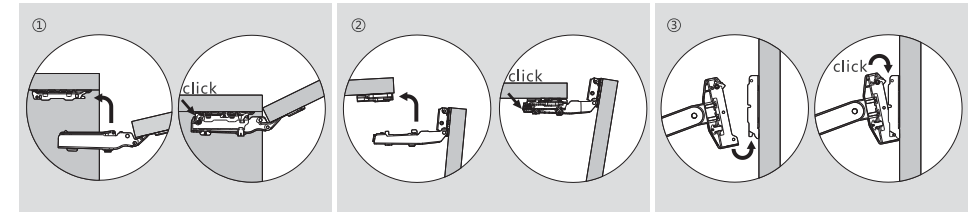
Drilling distance K(mm)	3	4	5	6
Door overlay D(mm)	15	16	17	18



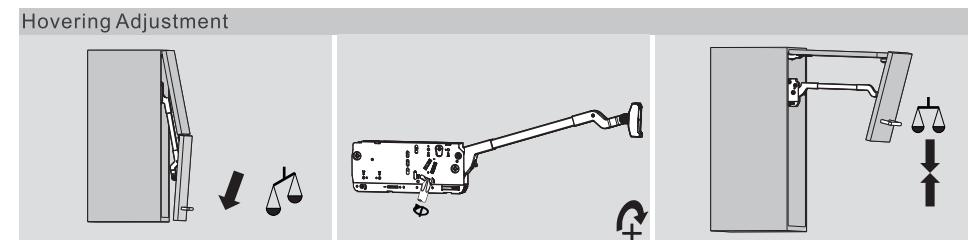
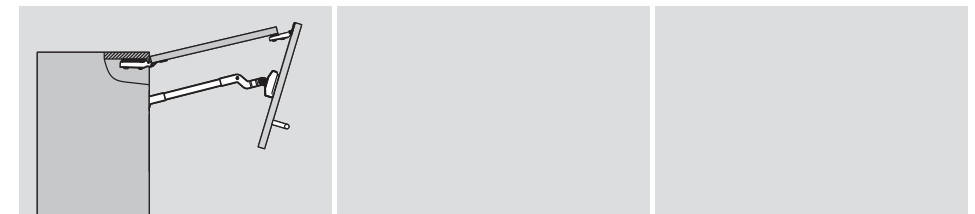
Assembly

The arm of this device could spring up and cause injury.  
Do not push the arm down without door attached.

Door Assembly



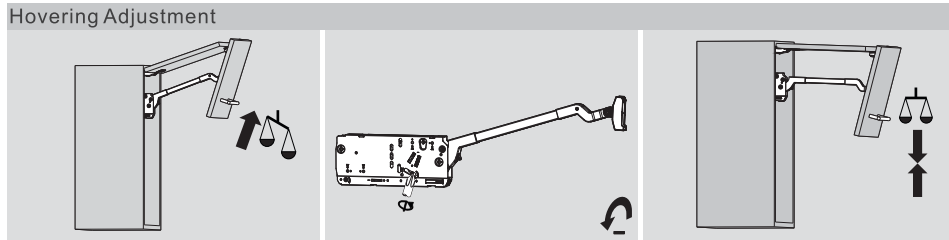
Door Assembly



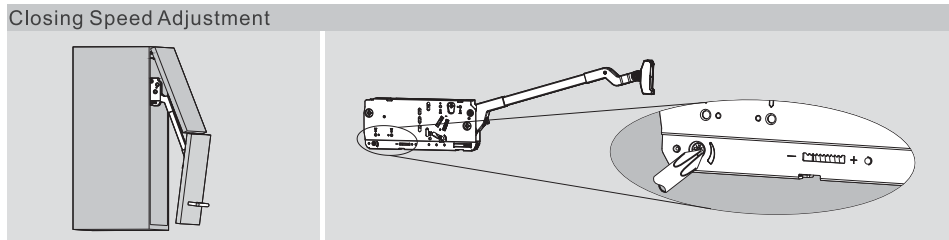
Adjustment

# TOP-STAYS

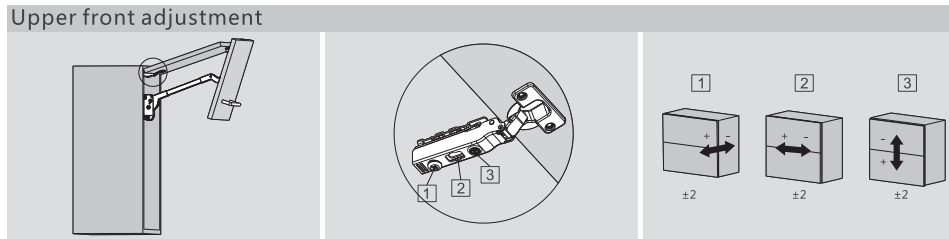
Assembly , Removal and Adjustment(for ST series Bi-fold Lifting System)



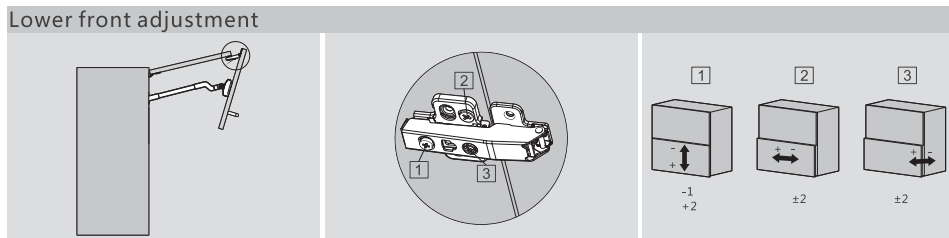
Adjustment



"+" increasing soft-closing time (turn adjustment screw counter-clockwise)  
"-" reducing soft-closing time (turn adjustment screw clockwise)



120° hinge



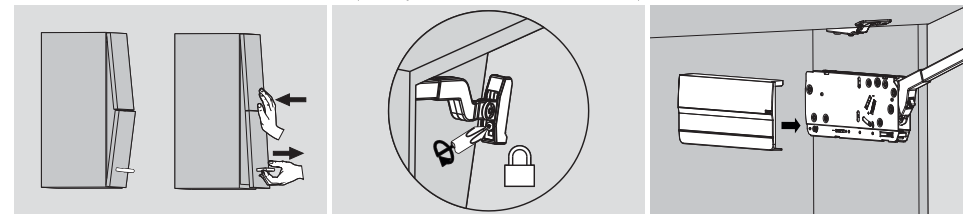
Centre hinge



Door Assembly

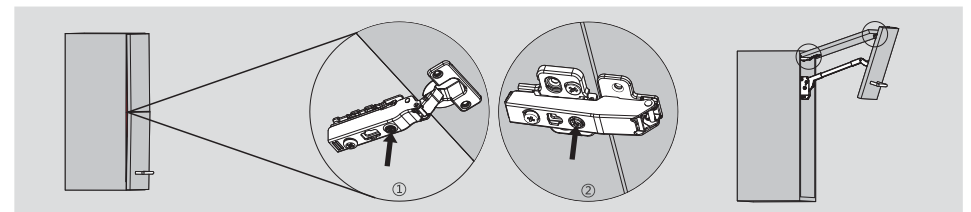
"+" reducing soft-closing time (turn adjustment screw clockwise)  
"-" increasing soft-closing time (turn adjustment screw counter-clockwise)

Adjust positions of the doors

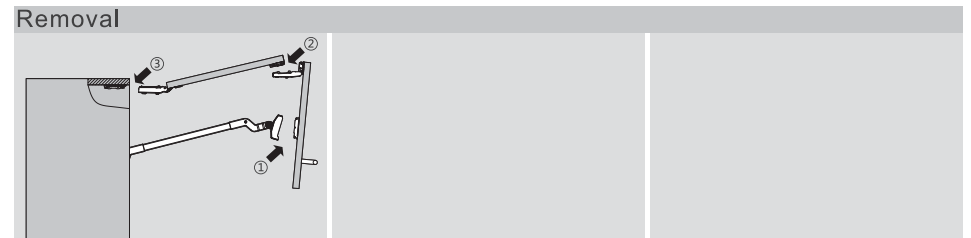


Adjust positions of the doors

Lock screw



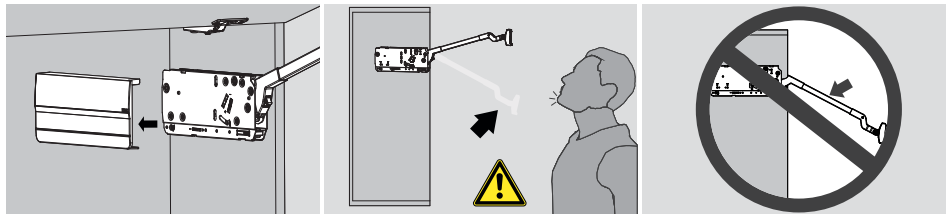
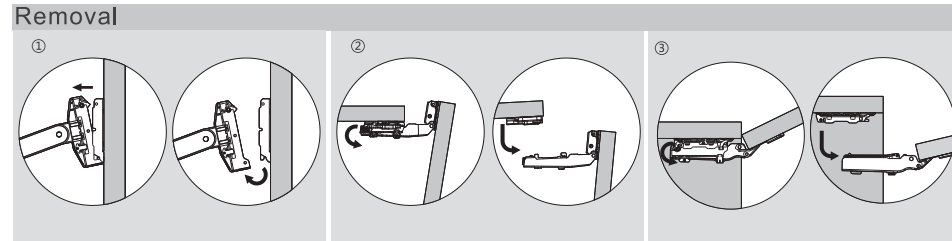
If there is small gap between the doors and the cabinet side; fine-tune the positions of the doors with the adjustment screws



Removal

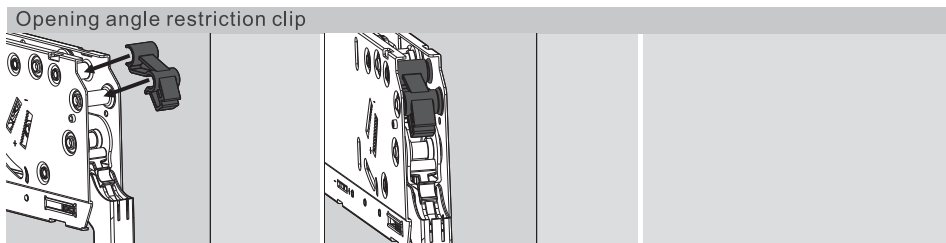
# TOP-STAYS

Assembly , Removal and Adjustment(for ST series Bi-fold Lifting System)

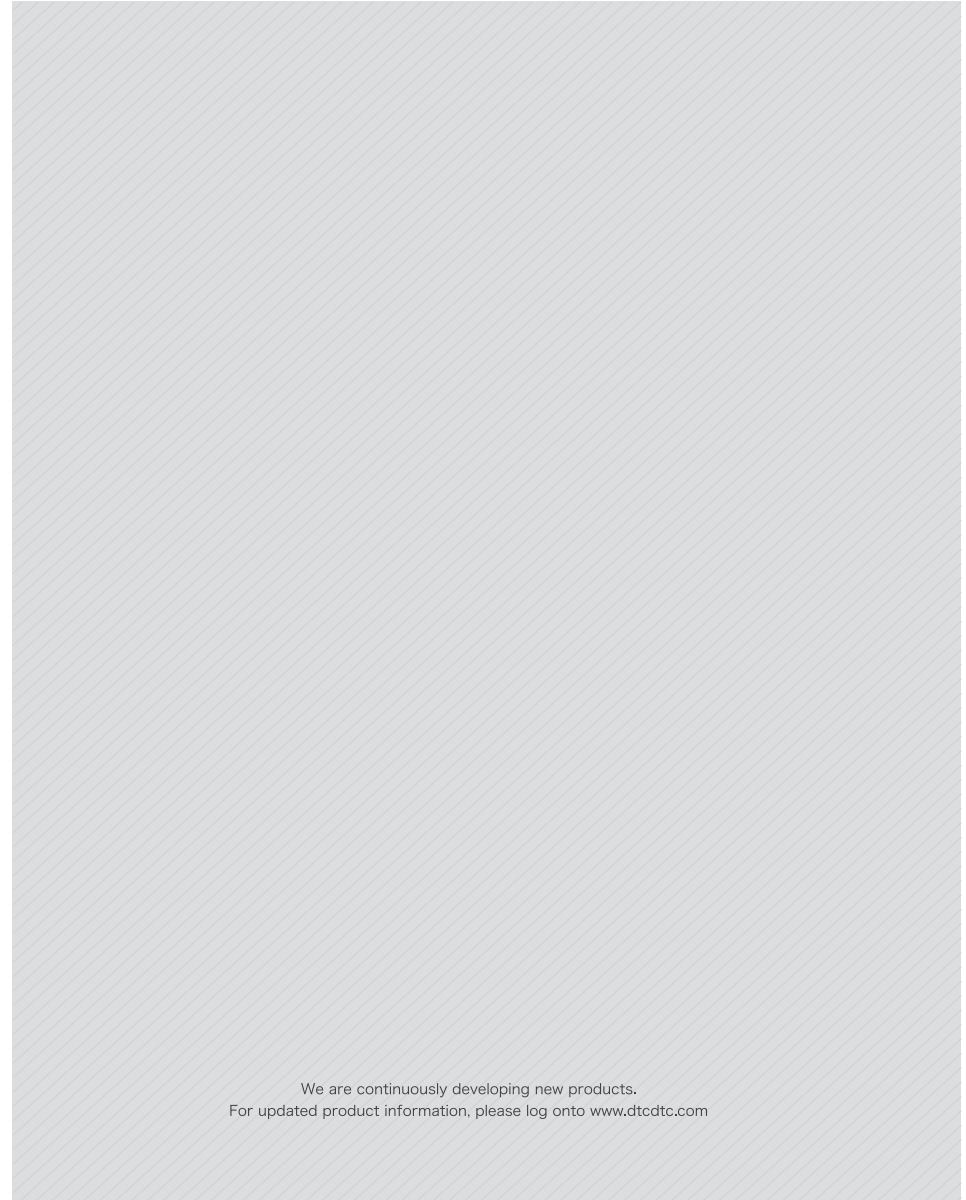
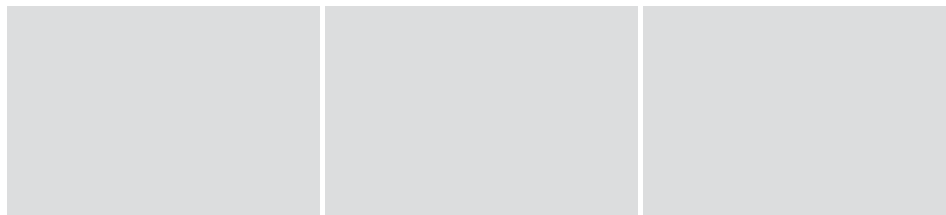


The arm of this device could spring up and cause injury!

Do not push the arm down without door attached



Assembly



We are continuously developing new products.  
For updated product information, please log onto [www.dtcctc.com](http://www.dtcctc.com)